

1

2

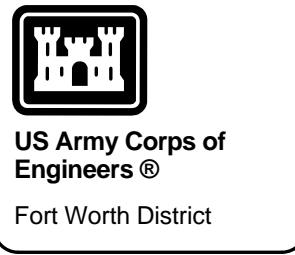
3

4

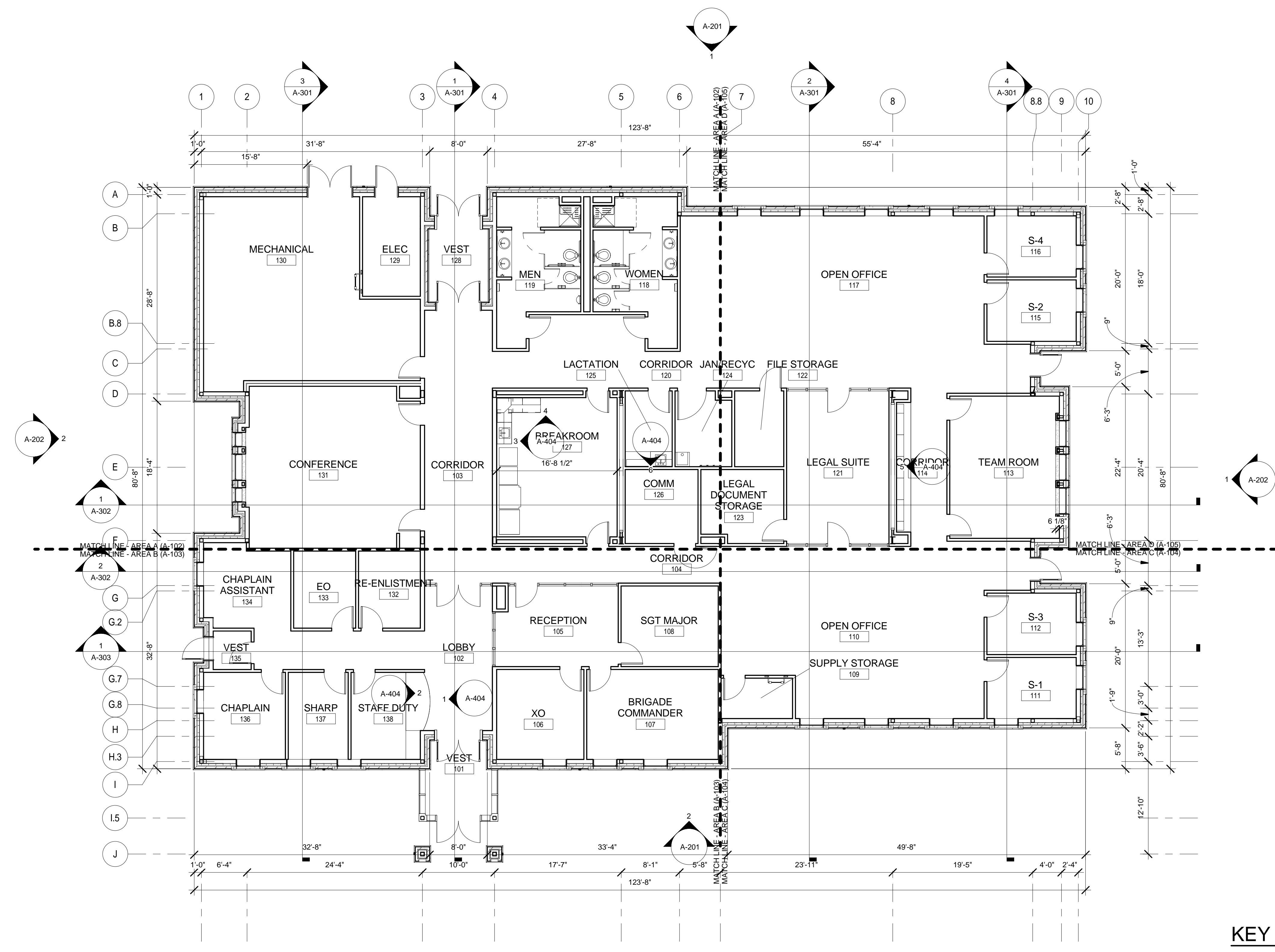
5

### FLOOR PLAN NOTES:

- RE: SHEET A-001 FOR GENERAL NOTES.
- A RECESSED MOUNTED KNOX BOX WILL BE REQUIRED AT THE MAIN ENTRANCE. BOX #3275 DARK BRONZE WITH TAMPER SWITCHES AND #3290 MOUNTING KITS WILL BE REQUIRED. CONTRACTOR NOTIFY INSTALLATION'S FIRE PROTECTION SPECIALIST FOR AN APPLICATION FOR KEYING TO INSTALLATION'S FIRE DEPARTMENT ACCOUNT. RE: SHEET A-002 FOR DETAILS.
- RE: CIVIL PLANS FOR DOWNSPOUT CONNECTIONS TO STORM DRAIN.
- RE: MECH PLANS FOR FLOOR DRAINS AND LOUVER LOCATIONS.
- RE: INTERIORS FOR CORNER GUARD DETAILS AND NOTES.

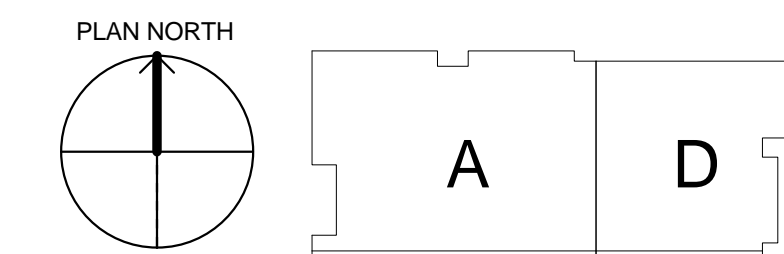


D  
C  
B  
A



**1**  
A-101  
**FIRST FLOOR PLAN**  
1/8" = 1'-0"

### KEY PLAN



**CORRECTED FINAL**  
**NOT FOR CONSTRUCTION**

Tracking No.	Description	Symbol	Action	Date

Designed by: S. WEISSENSTEIN A. ELLIS	Date: 31 December 2013	Rev:
Drawn by: S. WEISSENSTEIN	Specification No.:	
Reviewed by: S. WEISSENSTEIN	Contract No.:	
Submitted by: S. WEISSENSTEIN	File Name: PLOT DATE PLOT SCALE	As Indicated

U.S. ARMY ENGINEER DISTRICT,  
CORPS OF ENGINEERS  
FORT WORTH, TEXAS

ENGINEERING/  
CONSTRUCTION DIVISION  
ENGINEERING BRANCH

AIT BRIGADE HEADQUARTERS  
REGIONAL ENERGY MODEL  
REGION 4A

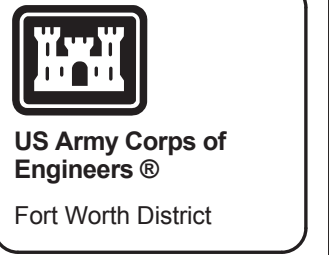
FIRST FLOOR PLAN

SHEET  
SEQUENCE  
NUMBER

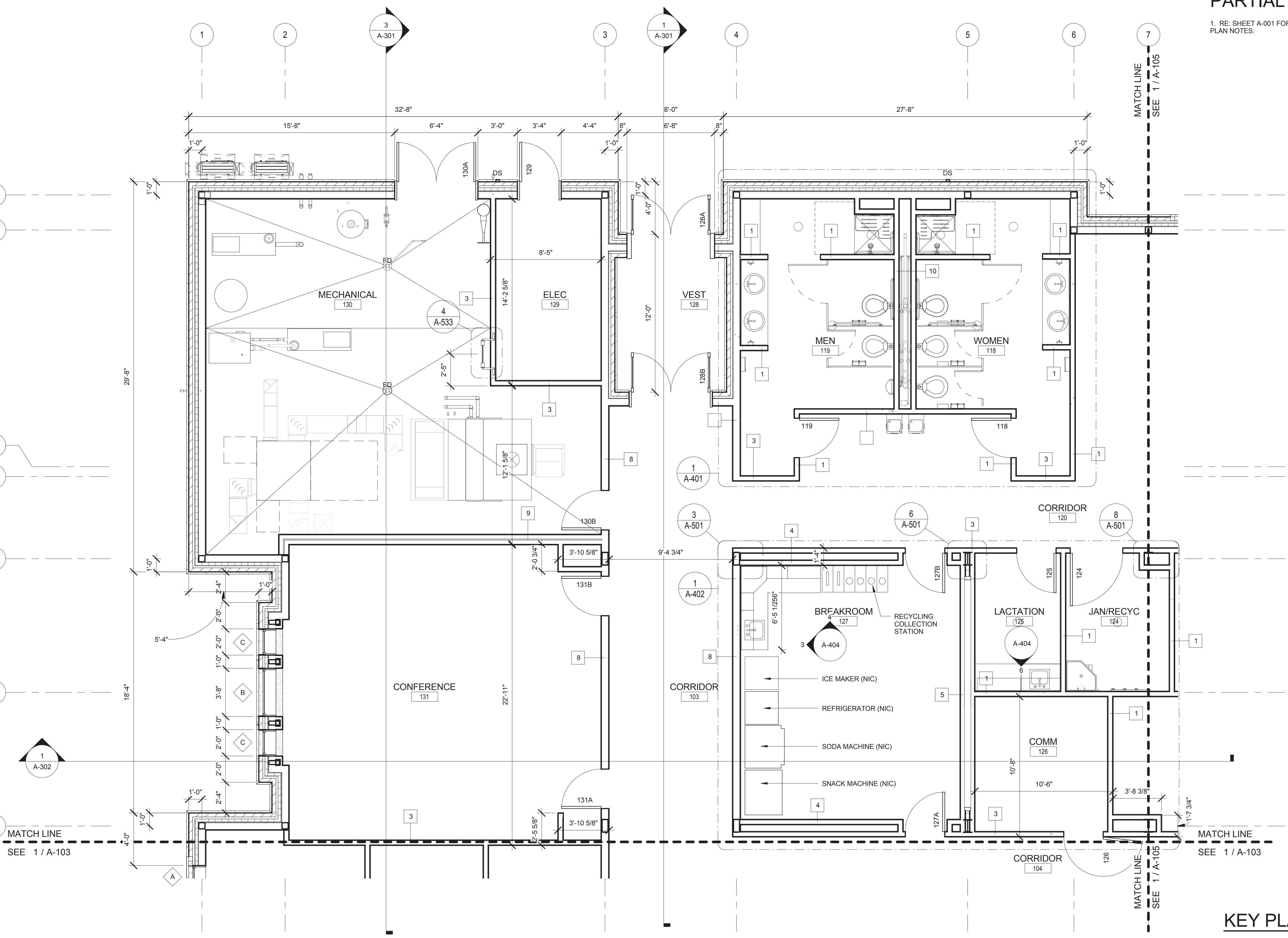
A-101

**PARTIAL FLOOR PLAN NOTES:**

1. RE: SHEET A-001 FOR FLOOR GENERAL NOTES AND A-101 FOR FLOOR PLAN NOTES.

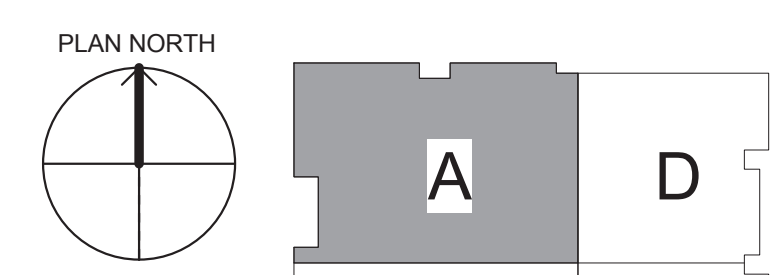


US Army Corps of Engineers  
Fort Worth District



**1 PARTIAL FLOOR PLAN - A**  
A-102 1/4" = 1'-0"

**KEY PLAN A**



**CORRECTED FINAL**  
**NOT FOR CONSTRUCTION**

Symbol	Description	Tracking No.	Action	Date

Designed by: S. WEISSENSTEIN/A. ELLIS	Date: 31 December 2013	Rev:
Drawn by: S. WEISSENSTEIN	Application No.:	
Reviewed by: 	Contract No.:	
Submitted by: 	File Name: PLOT DATE: 02/26/13 PLOT SCALE: 1/4"=1'-0"	

U.S. ARMY ENGINEER DISTRICT,  
CORPS OF ENGINEERS  
FORT WORTH, TEXAS

ENGINEERING/  
CONSTRUCTION DIVISION  
ENGINEERING BRANCH

AIT BRIGADE HEADQUARTERS  
REGIONAL ENERGY MODEL  
REGION 4A

PARTIAL FLOOR PLAN A

SHEET  
SEQUENCE  
NUMBER

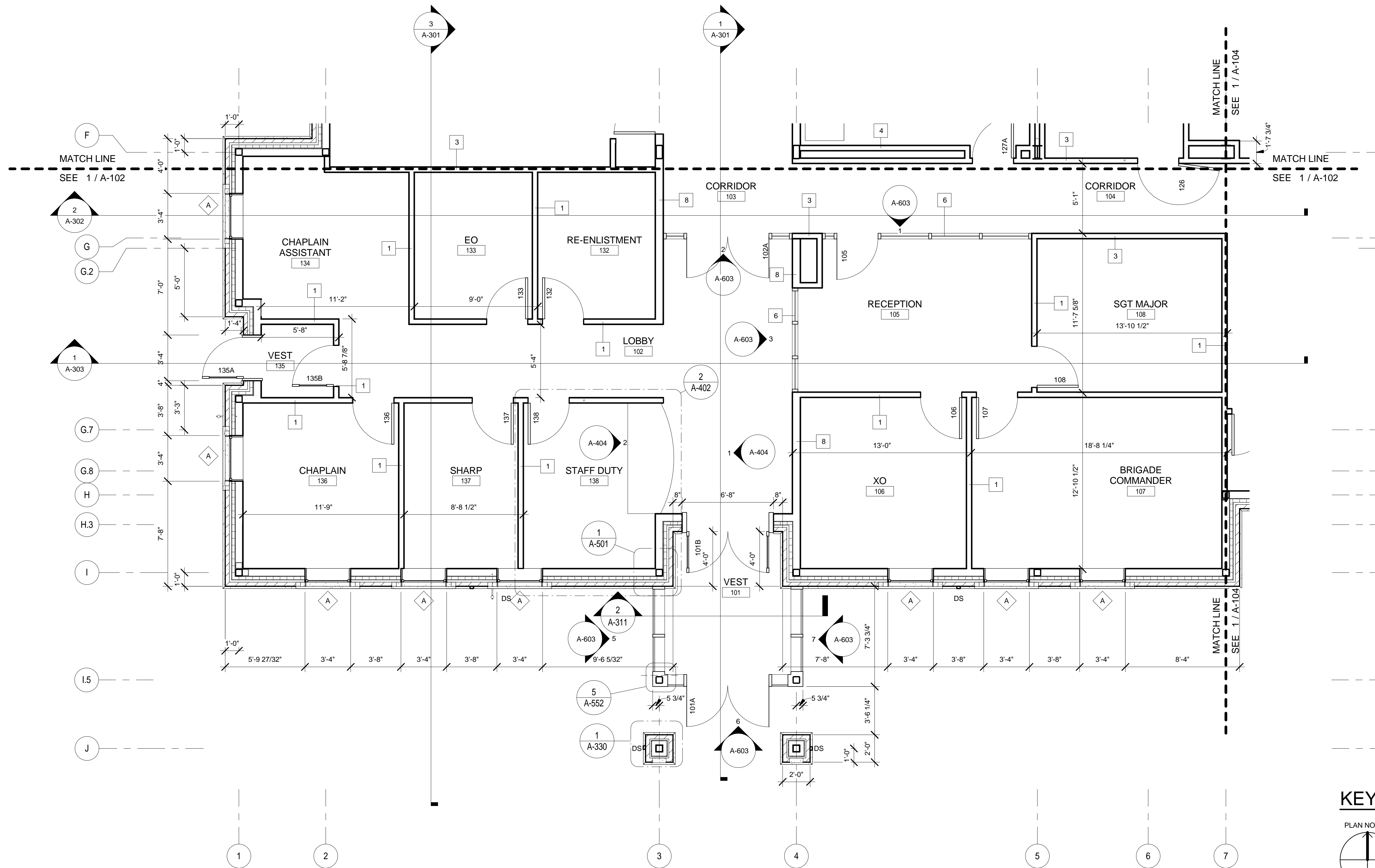
**A-102**

**PARTIAL FLOOR PLAN NOTES:**

1. RE: SHEET A-001 FOR FLOOR GENERAL NOTES AND A-101 FOR FLOOR PLAN NOTES.

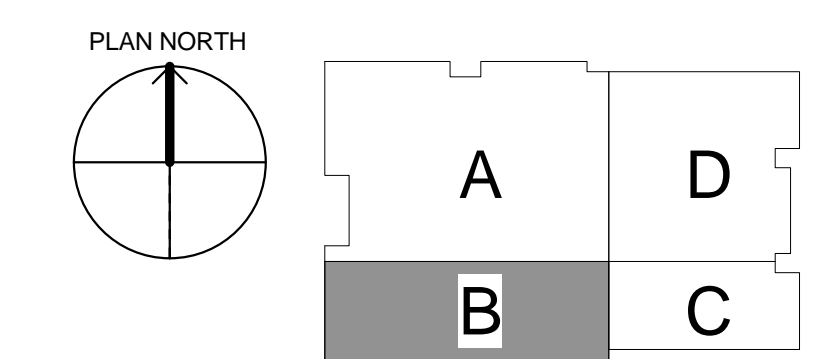


US Army Corps of Engineers  
Fort Worth District



**1**  
PARTIAL FLOOR PLAN B  
1/4" = 1'-0"

**KEY PLAN B**



**CORRECTED FINAL  
NOT FOR CONSTRUCTION**

Tracking No.	Action	Date

Designed by: S. WEISSENSTEIN / A. ELLIS	Date: 31 December 2013	Rev:
Drawn by: S. WEISSENSTEIN	Scale/Revision No.:	
Reviewed by: 	Contract No.:	
Submitted by: 	File Name:	
Checked by: 	Plot Date:	

U.S. ARMY ENGINEER DISTRICT,  
CORPS OF ENGINEERS  
FORT WORTH, TEXAS

ENGINEERING/  
CONSTRUCTION DIVISION  
ENGINEERING BRANCH

AIT BRIGADE HEADQUARTERS  
REGIONAL ENERGY MODEL  
REGION 4A

PARTIAL FLOOR PLAN B

SHEET  
SEQUENCE  
NUMBER

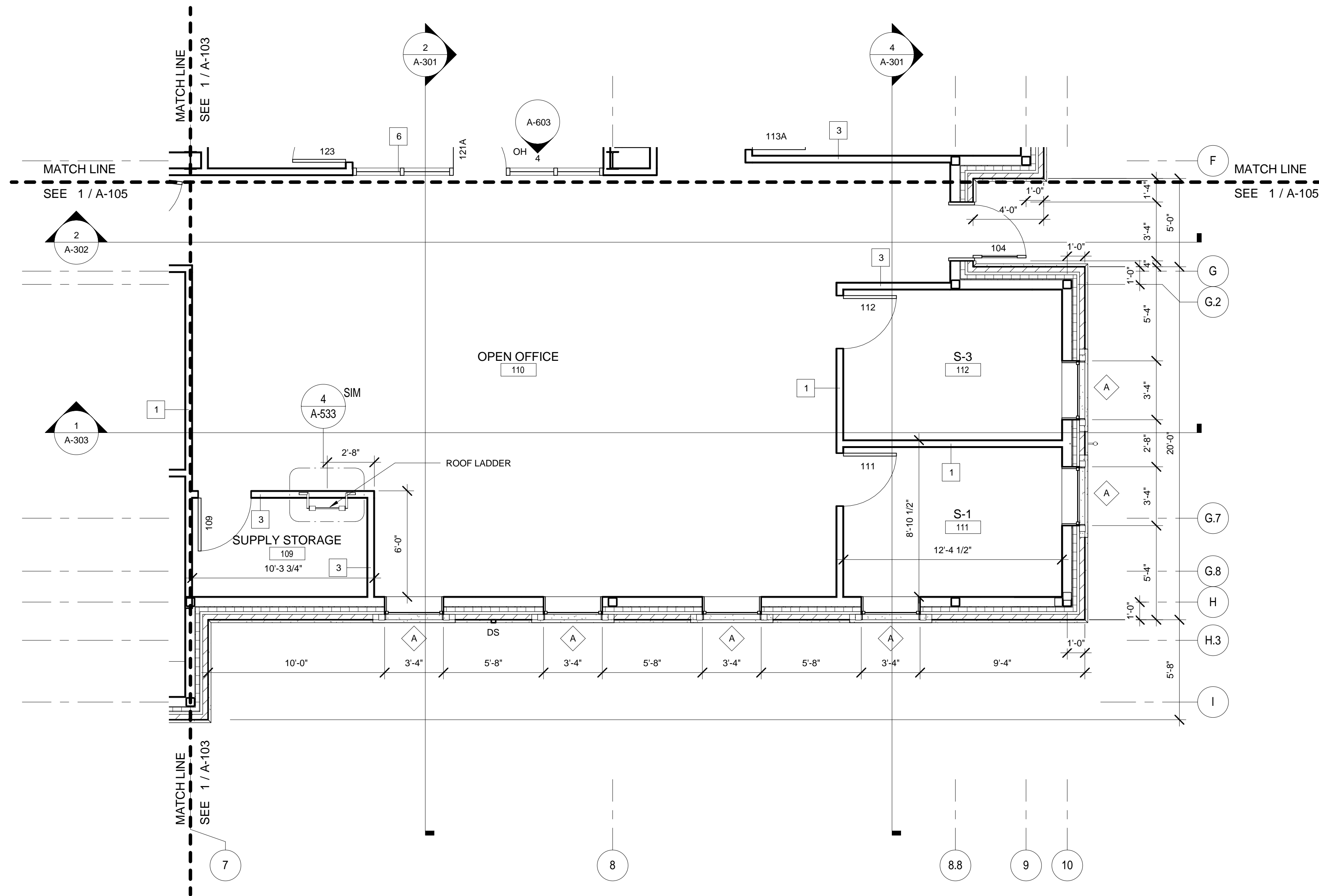
A-103

**PARTIAL FLOOR PLAN NOTES:**

1. RE: SHEET A-001 FOR FLOOR GENERAL NOTES AND A-101 FOR FLOOR PLAN NOTES.

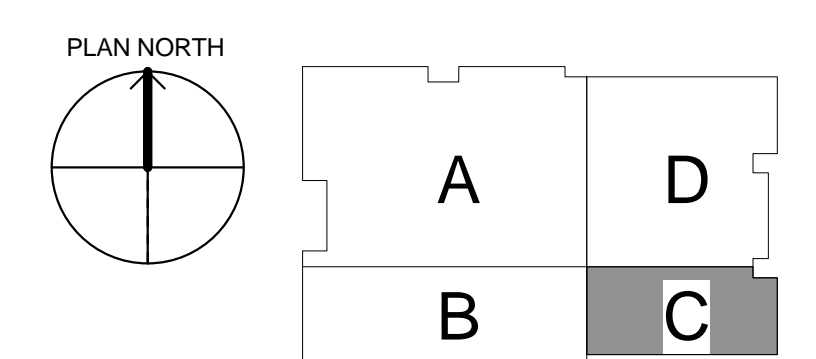


US Army Corps of Engineers  
Fort Worth District



1 PARTIAL FLOOR PLAN C  
A-104 1/4" = 1'-0"

**KEY PLAN C**



**CORRECTED FINAL  
NOT FOR CONSTRUCTION**

Symbol	Description	Tracking No.	Action	Date

U.S. ARMY ENGINEER DISTRICT,  
CORPS OF ENGINEERS  
FORT WORTH, TEXAS

ENGINEERING/  
CONSTRUCTION DIVISION  
ENGINEERING BRANCH

Designed by: S. WEISSENSTEIN/A. ELLIS  
Drawn by: S. WEISSENSTEIN  
Reviewed by: S. WEISSENSTEIN  
Checked by: S. WEISSENSTEIN  
Submitted by: S. WEISSENSTEIN  
Contract No.:  
File Name: PLOT DATE: 12/31/13  
PLOT SCHEDULE: 12/31/13

Date: 31 December 2013  
Revision:  
Revision No.:

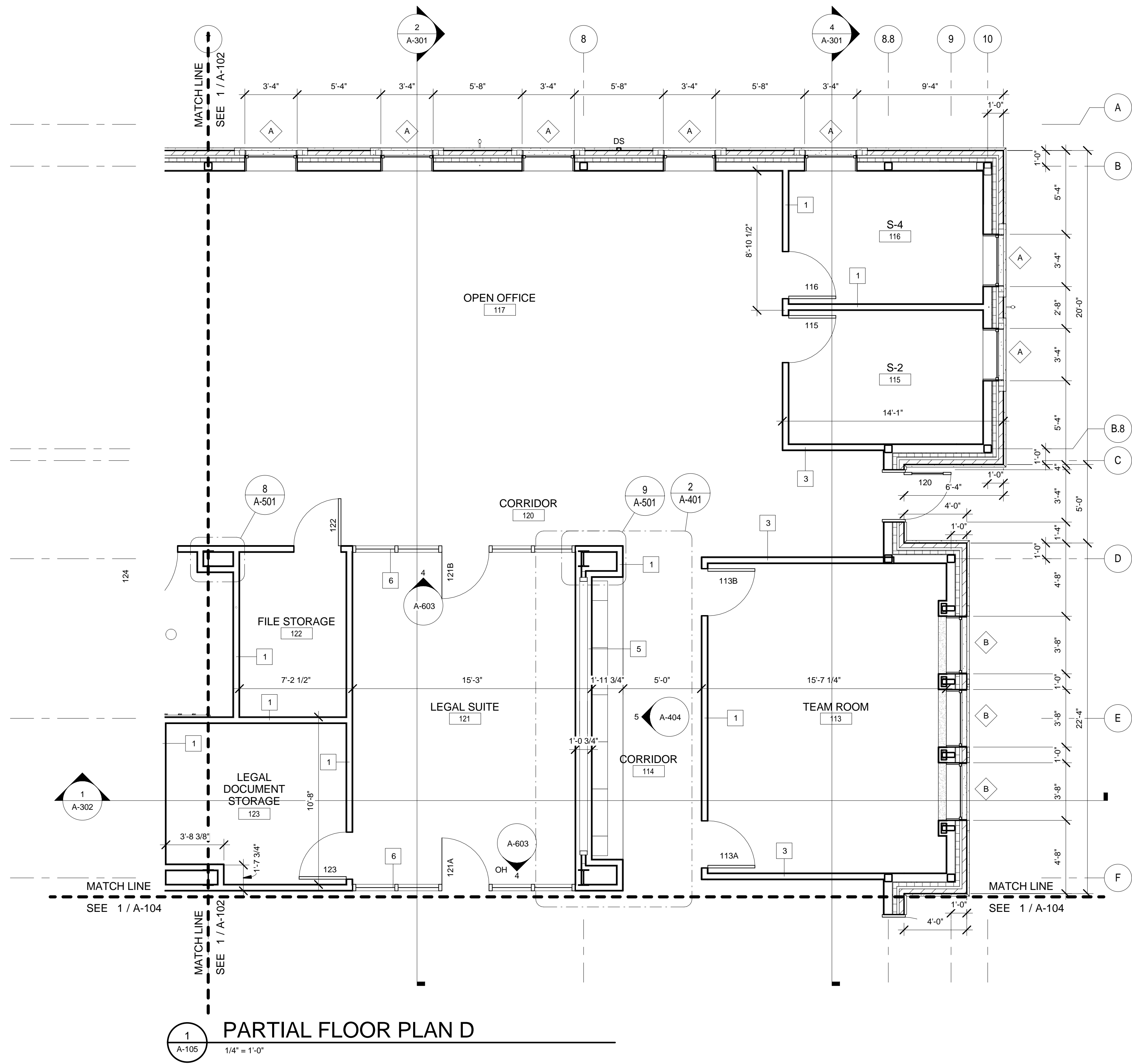
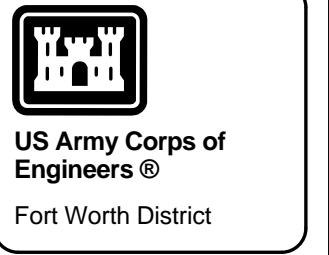
AIT BRIGADE HEADQUARTERS  
REGIONAL ENERGY MODEL  
REGION 4A

PARTIAL FLOOR PLAN C

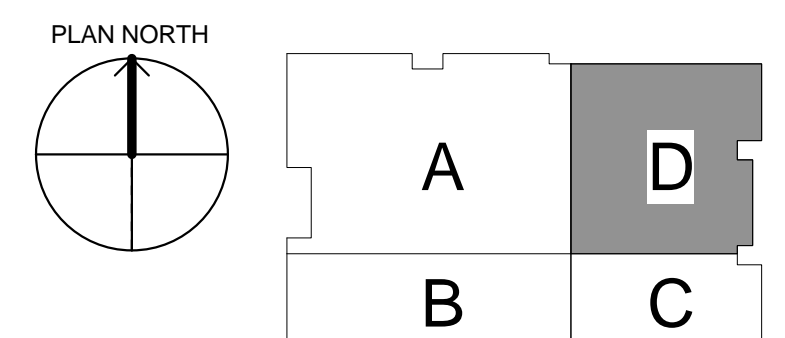
SHEET  
SEQUENCE  
NUMBER  
**A-104**

**PARTIAL FLOOR PLAN NOTES:**

1. RE: SHEET A-001 FOR FLOOR GENERAL NOTES AND A-101 FOR FLOOR PLAN NOTES.



**KEY PLAN D**



**CORRECTED FINAL  
NOT FOR CONSTRUCTION**

Symbol	Description	Tracking No.	Action	Date

Designed by: S. WEISSENSTEIN / A. ELLIS	Date: 31 December 2013	Rev:
Drawn by: S. WEISSENSTEIN	Scale/Revision No.:	
Reviewed by: Checker	Contract No.:	
Submitted by: PROJECT MANAGER / ARCHITECTURE	File Name: PLOT DATE: 12/31/13 PLOT SCALE: 1/4"=1'-0"	

U.S. ARMY ENGINEER DISTRICT,  
CORPS OF ENGINEERS  
FORT WORTH, TEXAS

ENGINEERING/  
CONSTRUCTION DIVISION  
ENGINEERING BRANCH

AIT BRIGADE HEADQUARTERS  
REGIONAL ENERGY MODEL  
REGION 4A

PARTIAL FLOOR PLAN D

SHEET  
SEQUENCE  
NUMBER

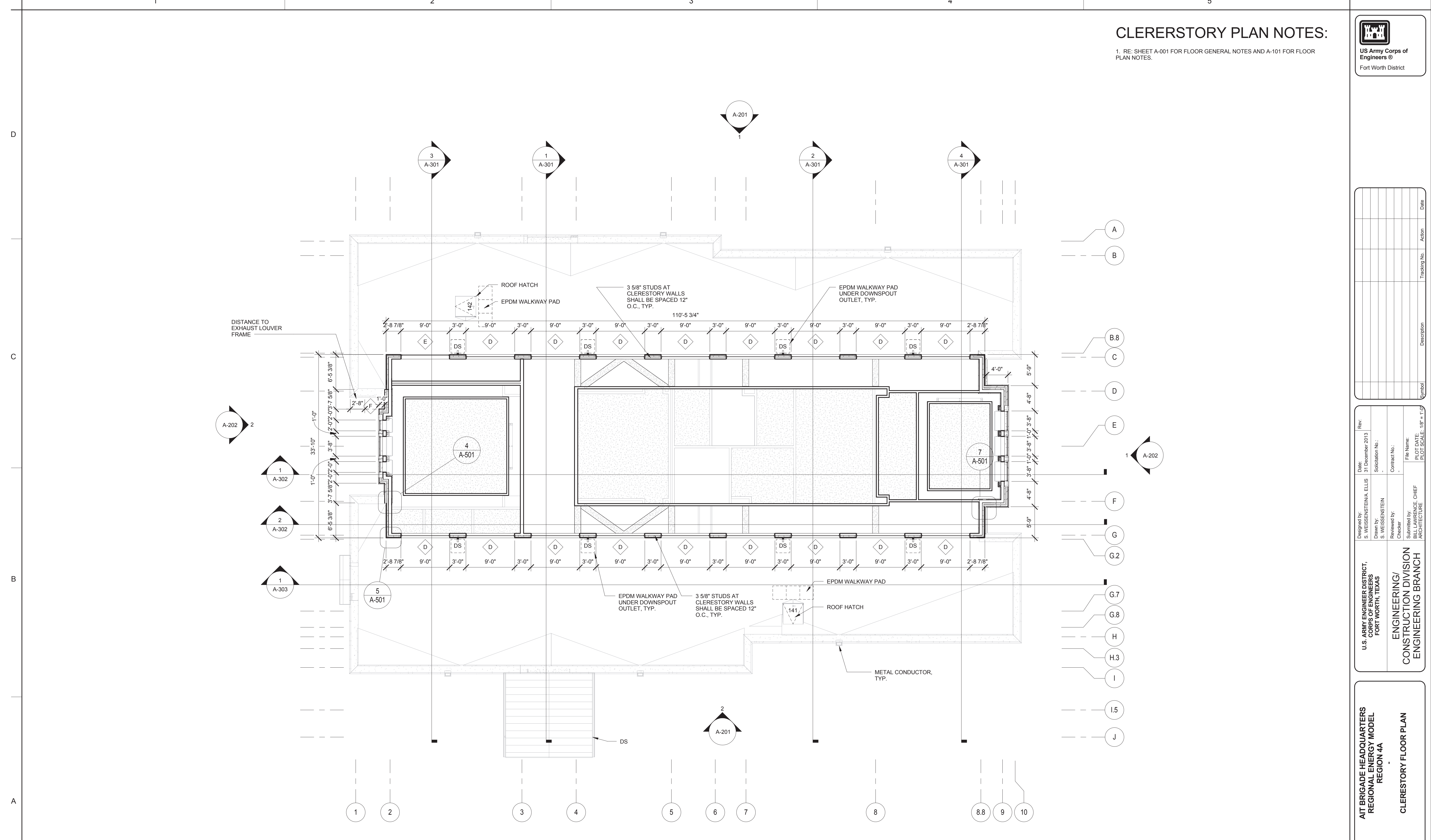
A-105

**CLERERSTORY PLAN NOTES:**

1. RE: SHEET A-001 FOR FLOOR GENERAL NOTES AND A-101 FOR FLOOR PLAN NOTES.



US Army Corps of Engineers  
Fort Worth District



**1**  
A-106  
**CLERESTORY PLAN**  
1/8" = 1'-0"

**CORRECTED FINAL  
NOT FOR CONSTRUCTION**

Tracking No.	Description	Symbol	Action	Date

Designed by: S. WEISSENSTEIN/VA ELLIS	Date: 31 December 2013	Rev:
Drawn by: S. WEISSENSTEIN	Application No.:	
Reviewed by: S. WEISSENSTEIN	Contract No.:	
Submitted by: S. WEISSENSTEIN	File Name: PLOT DATE PLOT SCALE: 1/8" = 1'-0"	

U.S. ARMY ENGINEER DISTRICT,  
CORPS OF ENGINEERS  
FORT WORTH, TEXAS

**ENGINEERING/  
CONSTRUCTION DIVISION  
ENGINEERING BRANCH**

**AIT BRIGADE HEADQUARTERS  
REGIONAL ENERGY MODEL  
REGION 4A**

**CLERESTORY FLOOR PLAN**

**SHEET  
SEQUENCE  
NUMBER**  
**A-106**

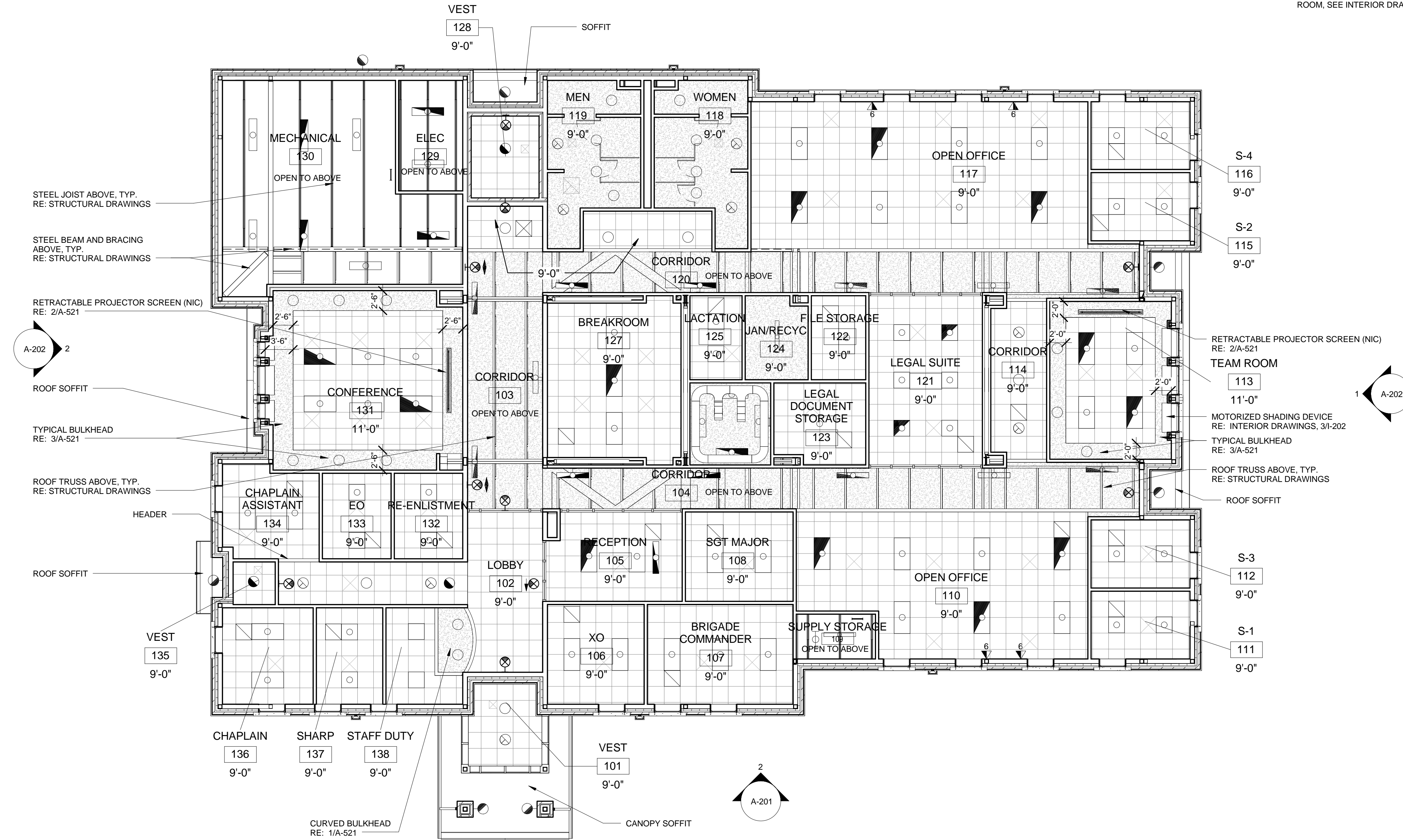
# REFLECTED CEILING PLAN GENERAL NOTES

- SEE SHEET A-001 FOR GENERAL NOTES, ABBREVIATIONS, AND CEILING PLAN LEGEND.
- FIXTURES ARE SHOWN FOR POSITIONING IN FINISHED CEILING. RE: ELECTRICAL, MECHANICAL, AND FIRE PROTECTION FOR FIXTURE TYPES AND LOCATIONS
- IN SQUARE OR RECTANGULAR ROOMS, CENTER CEILING TILES BOTH WAYS, TYP. CENTER FIXTURES AND ACCESSORIES IN CEILING TILES, UNO.
- RE: MECHANICAL AND SPECIFICATIONS ON LOCATIONS FOR CEILING ACCESS PANELS. RE: SHEET A-520 FOR INSTALLATION DETAILS.
- RE: FA AND LIGHTING DRAWINGS FOR EXIT SIGN LOCATIONS.
- RE: FINISH SCHEDULE IN INTERIOR DRAWINGS FOR CEILING FINISHES.
- RE: SHEETS A-520 AND A-521 FOR FURRING AND BULKHEAD DETAILS.
- FOR MOTORIZED SHADING DEVICES IN CONFERENCE ROOM AND TEAM ROOM, SEE INTERIOR DRAWINGS I-202



US Army Corps of Engineers  
Fort Worth District

D  
C  
B  
A



**1** FIRST FLOOR REFLECTED CEILING PLAN  
A-107 1/8" = 1'-0"

**CORRECTED FINAL  
NOT FOR CONSTRUCTION**

Tracking No.	Action	Date

Designed by: S. WEISSENSTEIN A. ELLIS	Date: 31 December 2013	Rev:
Drawn by: S. WEISSENSTEIN	Specification No.:	
Reviewed by: 	Contract No.:	
Submitted by: 	File Name: PLOT DATE: 1/8" = 1'-0"	
Checked by: 	Checked by: 	

U.S. ARMY ENGINEER DISTRICT,  
CORPS OF ENGINEERS  
FORT WORTH, TEXAS

ENGINEERING/  
CONSTRUCTION DIVISION  
ENGINEERING BRANCH

AIT BRIGADE HEADQUARTERS  
REGIONAL ENERGY MODEL  
REGION 4A

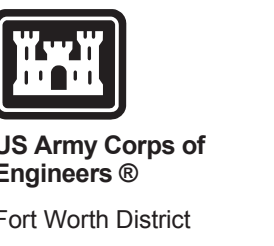
REFLECTED CEILING PLAN

SHEET  
SEQUENCE  
NUMBER

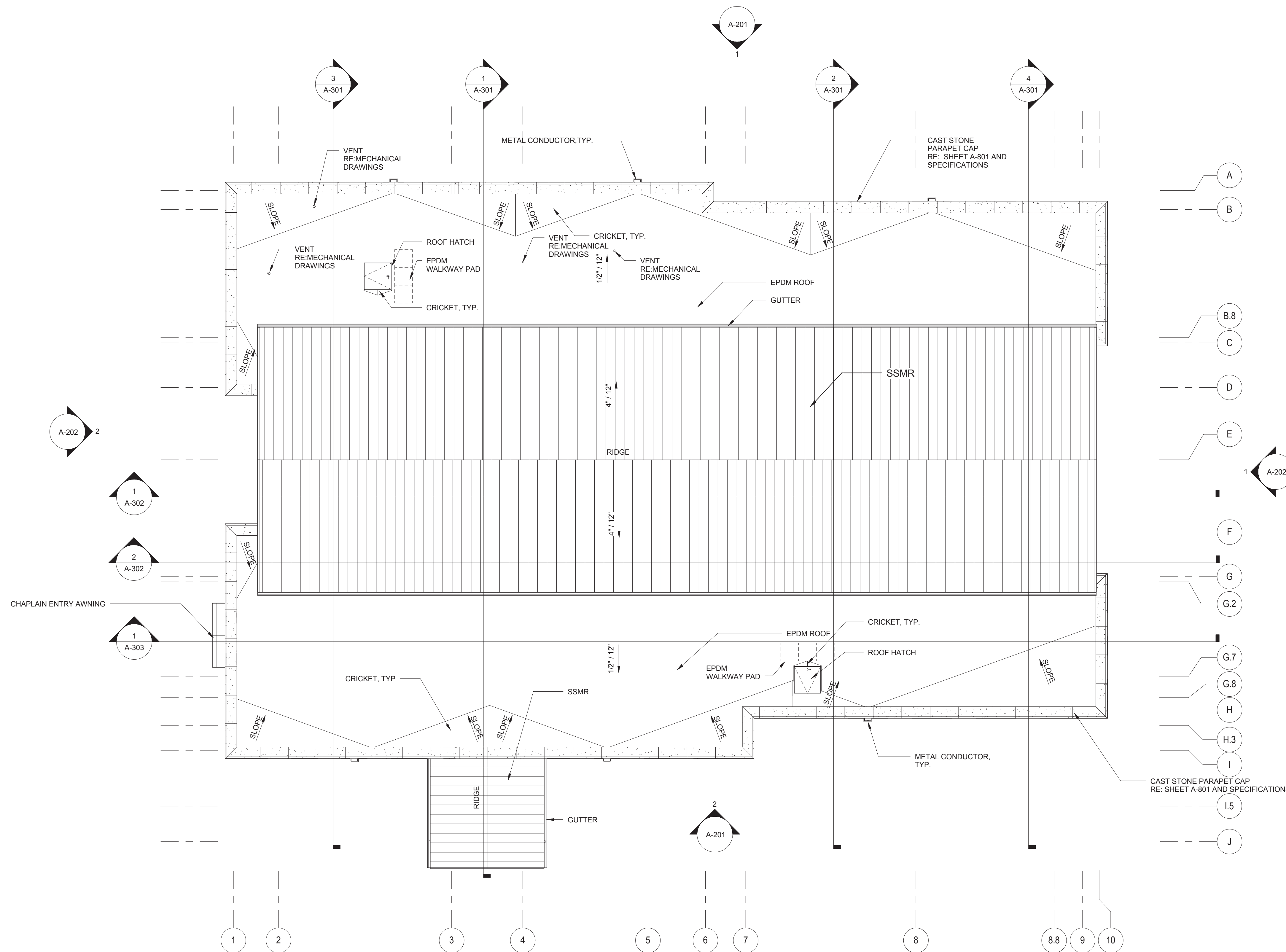
A-107

**ROOF PLAN NOTES:**

1. RE: SHEET A-001 FOR GENERAL NOTES.
2. ALL ROOF CRICKETS TO BE SLOPED 1/2" / 12", TYP.
3. RE: CIVIL PLANS FOR DOWNSPOUT CONNECTIONS TO STORM DRAIN.



US Army Corps of Engineers  
Fort Worth District



**1**  
A-108  
**ROOF PLAN**  
1/8" = 1'-0"

**CORRECTED FINAL  
NOT FOR CONSTRUCTION**

Symbol	Description	Tracking No.	Action	Date

Designed by: S. WEISSENSTEIN / A. ELLIS	Date: 31 December 2013	Rev:
Drawn by: S. WEISSENSTEIN	Specification No.:	
Reviewed by: 	Contract No.:	
Submitted by: 	File Name: PLOT DATE: 1/8" = 1'-0"	
U.S. ARMY ENGINEER DISTRICT, CORPS OF ENGINEERS FORT WORTH, TEXAS ENGINEERING/ CONSTRUCTION DIVISION ENGINEERING BRANCH		

AIT BRIGADE HEADQUARTERS  
REGIONAL ENERGY MODEL  
REGION 4A  
**ROOF PLAN**

SHEET  
SEQUENCE  
NUMBER  
**A-108**



# EXTERIOR FINISH SCHEDULE

ITEM	DESCRIPTION
SSMR	DARK BRONZE ANODIZED
BRICK	MIDLOTHIAN 4-1111A; LAWRENCEVILLE OR RICHMOND LEE 5-20 BRICK SIZE IS TO BE MODULAR FLAMINGO-BRIXMENT COLOR MASONRY CEMENT C380 WHITE OAK AS MANUFACTURED BY ESSROC ITALCEMENTI GROUP
MORTAR	YORK BUILDING YBP-631 (BUFF LIMESTONE COLOR)
SPLIT-FACED CMU	COLOR TO MATCH YORK BUILDING YBP-631 (BUFF LIMESTONE COLOR)
CAST STONE	DARK BRONZE ANODIZED
ALUMINUM WINDOWS, CURTAIN WALLS, TRANSLUCENT PANEL FRAMES AND METAL WALL PANELS	DARK BRONZE ANODIZED
FACIA, SOFFIT, GUTTER AND DOWNSPOUTS	DARK BRONZE ANODIZED
STEEL DOORS AND FRAMES	DARK BRONZE ANODIZED
MISCELLANEOUS TRIM AND METAL SEALANTS AND CAULKING	MATCH ADJACENT MATERIALS
TRANSLUCENT PANEL	CRYSTAL WHITE

## GENERAL NOTES:

1. RE: SHEET A-801 FOR CAST STONE PROFILES.



US Army Corps of Engineers  
Fort Worth District

METAL FASCIA  
RE: SPECIFICATIONS

SSMR  
RE: SPECIFICATIONS

METAL GUTTER  
RE: SPECIFICATIONS

METAL FASCIA  
RE: SPECIFICATIONS

CHAPLAIN ENTRY ROOF BEYOND

SOFFIT  
19'-8"

CANOPY SOFFIT  
10'-0"

TOP OF CAST STONE BAND (UPPER)  
9'-4"

TOP OF CAST STONE BAND (LOWER)  
4'-0"

CAST STONE MEDALLION  
RE: SHEET A-801 AND SPECIFICATIONS

BRICK (MODULAR)  
RE: SPECIFICATIONS

SPLIT-FACE CMU  
RE: SPECIFICATIONS

CURTAIN WALL SYSTEM  
RE: SPECIFICATIONS

BRICK (MODULAR)  
RE: SPECIFICATIONS

SPLIT-FACE CMU  
RE: SPECIFICATIONS

CURTAIN WALL SYSTEM  
RE: SPECIFICATIONS

OVERFLOW SCUPPER  
RE: SPECIFICATIONS

METAL CONDUCTOR  
RE: SPECIFICATIONS

METAL WALL PANEL  
RE: SPECIFICATIONS

TRANSLUCENT PANEL  
RE: SPECIFICATIONS

CAST STONE CORNICE  
RE: SHEET A-801 AND SPECIFICATIONS

CONTROL JOINT, TYP.

CAST STONE BAND  
RE: SHEET A-801 AND SPECIFICATIONS

01 FIRST FLOOR  
0"

CAST STONE SILL  
RE: SHEET A-801 AND SPECIFICATIONS

SPLIT-FACE CMU  
RE: SPECIFICATIONS

METAL DOWNSPOUT  
RE: SPECIFICATIONS

2 SOUTH ELEVATION  
1/8" = 1'-0"

SSMR  
RE: SPECIFICATIONS

METAL GUTTER  
RE: SPECIFICATIONS

METAL FASCIA  
RE: SPECIFICATIONS

CAST STONE CORNICE  
RE: SHEET A-801 AND SPECIFICATIONS

TOP OF CAST STONE BAND (UPPER)  
9'-4"

BRICK (MODULAR)  
RE: SPECIFICATIONS

CAST STONE SILL  
RE: SHEET A-801 AND SPECIFICATIONS

SPLIT-FACE CMU  
RE: SPECIFICATIONS

METAL WALL PANEL  
RE: SPECIFICATIONS

TRANSLUCENT PANEL  
RE: SPECIFICATIONS

MECHANICAL LOUVER  
RE: SPECIFICATIONS

CAST STONE CORNICE AND CAP  
RE: SHEET A-801 AND SPECIFICATIONS

CHAPLAIN ENTRY ROOF BEYOND

SOFFIT  
19'-8"

TOP OF PARAPET  
17'-0"

CANOPY SOFFIT  
10'-0"

CAST STONE BAND  
RE: SHEET A-801 AND SPECIFICATIONS

FIRE ALARM BELL  
RE: ELECTRICAL DRAWINGS

METAL CONDUCTOR  
RE: SPECIFICATIONS

OVERFLOW SCUPPER  
RE: SPECIFICATIONS

METAL DOWNSPOUT  
RE: SPECIFICATIONS

1 NORTH ELEVATION  
1/8" = 1'-0"

**CORRECTED FINAL  
NOT FOR CONSTRUCTION**

Symbol	Description	Tracking No.	Action	Date

Designed by: S. WEISSENSTEIN A. ELLIS	Date: 31 December 2013	Rev:
Drawn by: S. WEISSENSTEIN	Specification No.:	
Reviewed by: Checker	Contract No.:	
Submitted by: ARCHITECTURE	File Name: PLOT DATE: 1/8" = 1'-0"	

U.S. ARMY ENGINEER DISTRICT,  
CORPS OF ENGINEERS  
FORT WORTH, TEXAS

ENGINEERING/  
CONSTRUCTION DIVISION  
ENGINEERING BRANCH

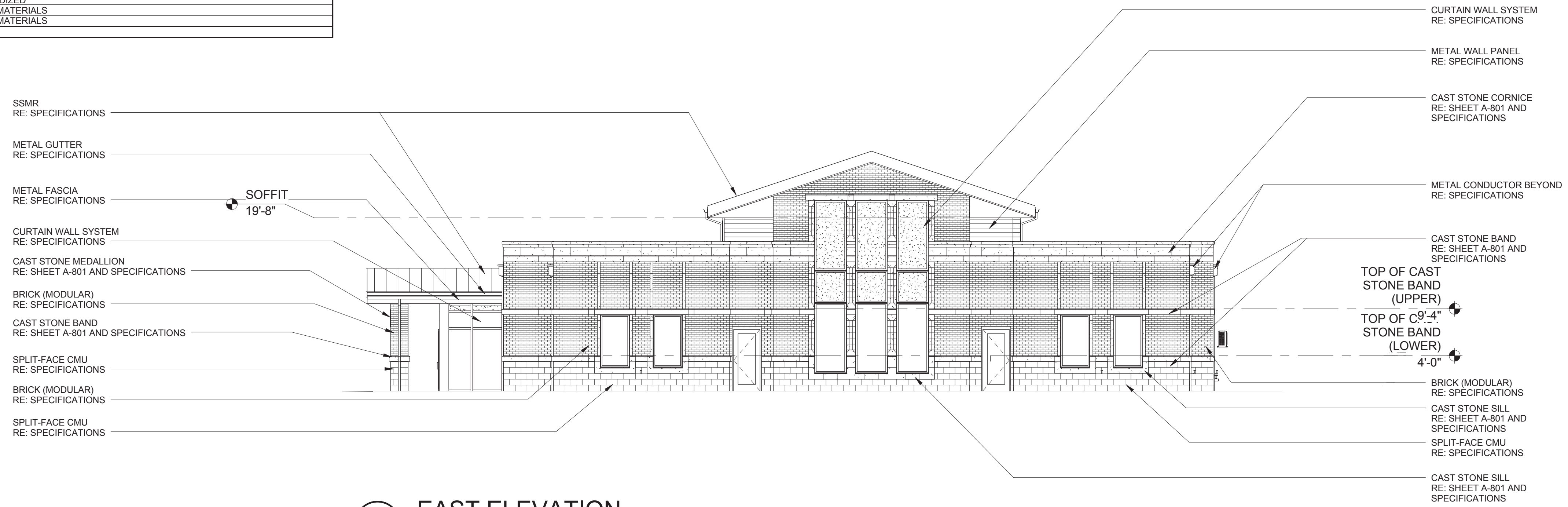
AIT BRIGADE HEADQUARTERS  
REGIONAL ENERGY MODEL  
REGION 4A

NORTH AND SOUTH ELEVATIONS

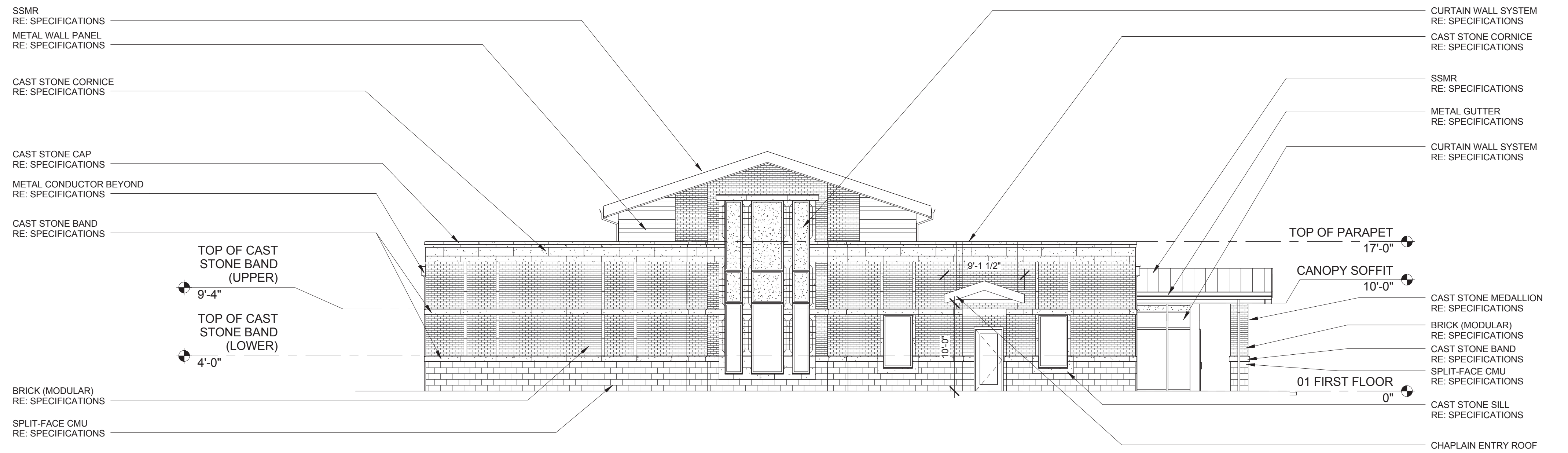
SHEET  
SEQUENCE  
NUMBER  
A-201

# EXTERIOR FINISH SCHEDULE

ITEM	DESCRIPTION
SSMR	DARK BRONZE ANODIZED
BRICK	MIDLOTHIAN 4-111A; LAWRENCEVILLE OR RICHMOND LEE 5-20, BRICK SIZE IS TO BE MODULAR, FLAMINGO-BRIXMENT COLOR MASONRY CEMENT C380 WHITE OAK
MORTAR	AS MANUFACTURED BY ESSROC ITAL CEMENTI GROUP YORK BUILDING YBP-631 (BUFF LIMESTONE COLOR)
SPLIT-FACE CMU	COLOR TO MATCH YORK BUILDING YBP-631 (BUFF LIMESTONE COLOR)
CAST STONE	DARK BRONZE ANODIZED
ALUMINUM WINDOWS, CURTAIN WALLS, TRANSLUCENT PANEL FRAMES AND METAL WALL PANELS	DARK BRONZE ANODIZED
FACIA, SOFFIT, GUTTER AND DOWNSPOUTS	DARK BRONZE ANODIZED
STEEL DOORS AND FRAMES	DARK BRONZE ANODIZED
MISCELLANEOUS TRIM AND METAL SEALANTS AND CAULKING	MATCH ADJACENT MATERIALS
TRANSLUCENT PANEL	CRYSTAL WHITE



**1 EAST ELEVATION**  
1/8" = 1'-0"



**2 WEST ELEVATION**  
1/8" = 1'-0"



US Army Corps of Engineers  
Fort Worth District

Tracking No.	Action	Date

Designed by: S. WEISSENSTEIN A. ELLIS	Date: 31 December 2013	Rev:
Drawn by: S. WEISSENSTEIN	Specification No.:	
Reviewed by: Checker	Contract No.:	
Submitted by: ENGINEERING CHIEF	File Name:	
ARCHITECTURE	PLOT DATE:	
	FILED:	

U.S. ARMY ENGINEER DISTRICT,  
CORPS OF ENGINEERS  
FORT WORTH, TEXAS

ENGINEERING/  
CONSTRUCTION DIVISION  
ENGINEERING BRANCH

AIT BRIGADE HEADQUARTERS  
REGIONAL ENERGY MODEL  
REGION 4A

EAST AND WEST ELEVATIONS

SHEET  
SEQUENCE  
NUMBER  
A-202

**CORRECTED FINAL  
NOT FOR CONSTRUCTION**